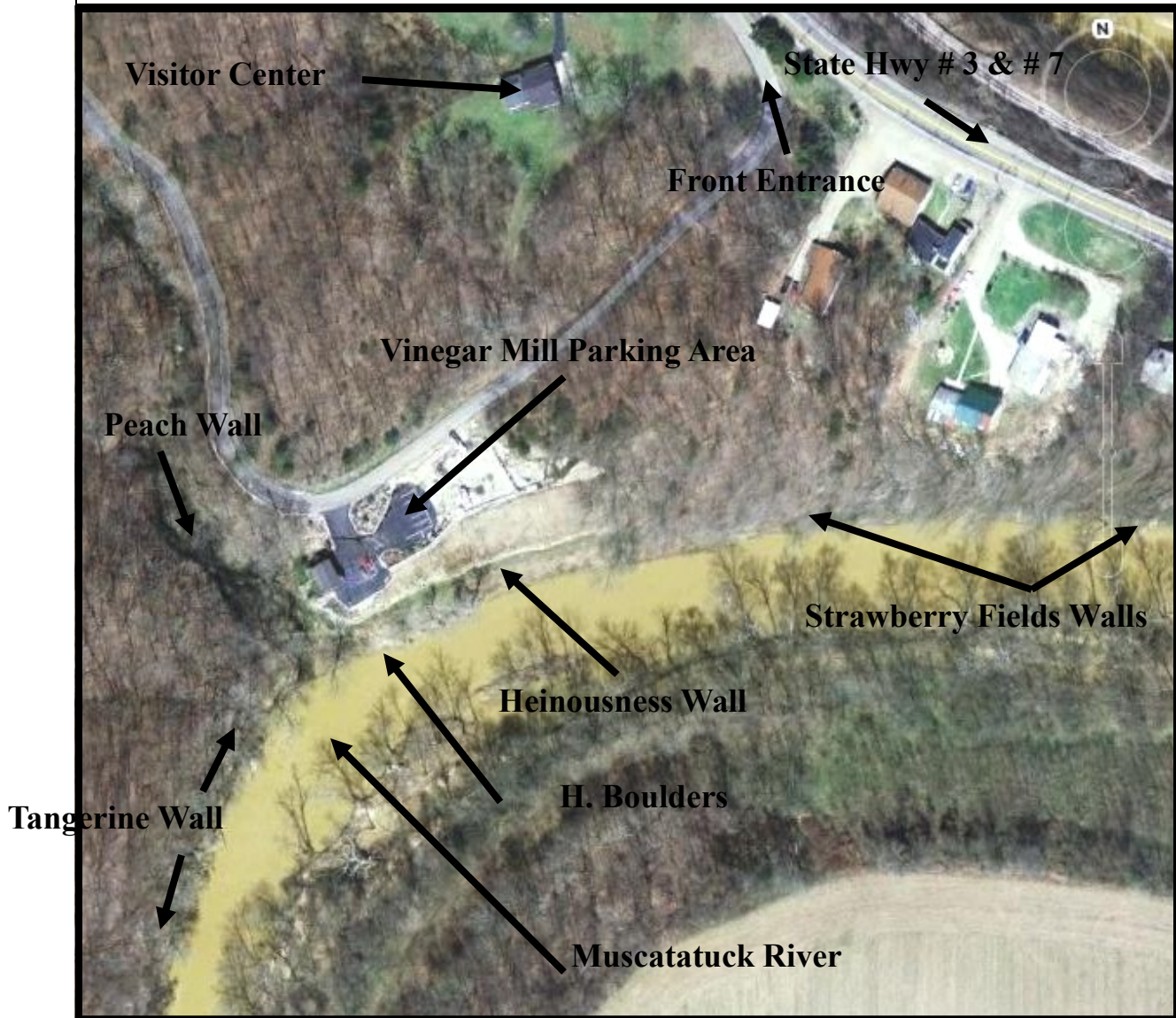


# Muscatatuck Park Bouldering Aerial Map



All of the climbing at the park is located at the Vinegar Mill Area, very easy access for parking and restroom facilities. As you go down (looking south- opposite orientation from this aerial) to the base of the stone steps at the Vinegar Mill:

- look left, all that you see is the Heinousness Wall.
- looking left past the trees and the Heinousness Wall is Strawberry Fields.
- go right at the steps then over the foot bridge and then right again and you will find the Peach Wall.
- go right at the steps then over the foot bridge and then take a left and follow the river to find the Tangerine Wall.